

SARAH SANDS

EST. 1846

TYPE 2A

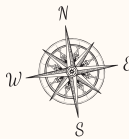
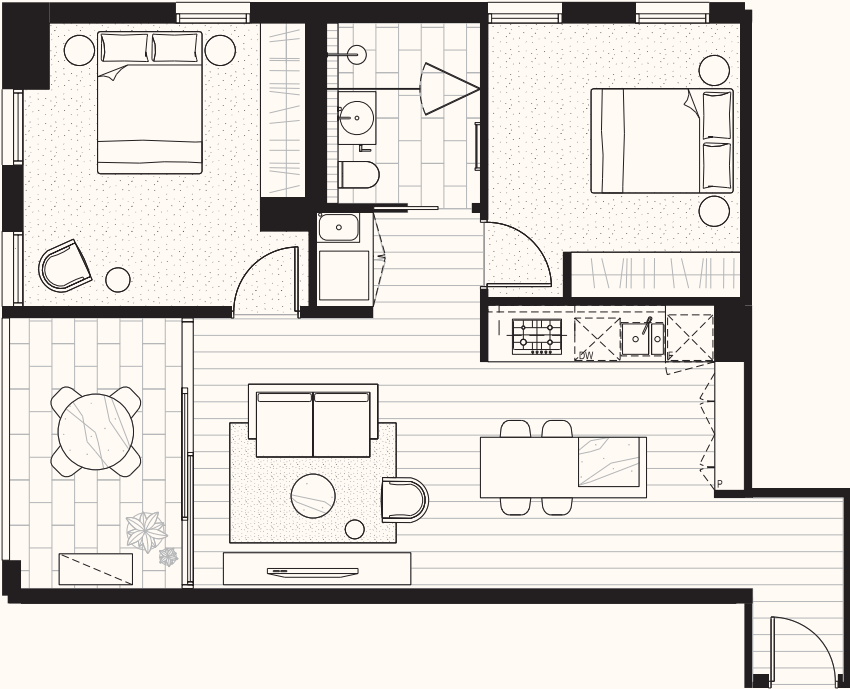
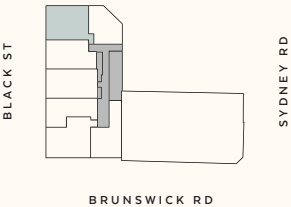
—2 Bedroom, 1 Bathroom—

Internal Area:	73.5m ²
External Area:	9.0m ²
<hr/>	
Total Area:	82.5m ²
<hr/>	

—Apartments—

1.02, 2.02

—Key Plan—



Disclaimer: These plans are intended as a guide only. The dimensions and areas are approximate only and may not accurately represent the actual dimensions and areas of the apartments or the spaces within them and are subject to change without notice. In addition, locations of utilities may vary during construction and fittings and fixtures on these plans are for illustrative purposes only. The areas are generally measured in accordance with the Property Council of Australia method of measurement. Prospective purchasers must rely on their own enquiries and should refer to the Contract of Sale and its schedules for all matters to be included in the purchase price of the apartment, including plans, finishes, fixtures, fittings, appliances and other particulars of sale. Loose furniture and planters are not included. Extent of floor finishes may vary. External space and landscaping indicative only.



SARAH SANDS

EST. 1846



TYPE 1B

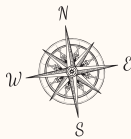
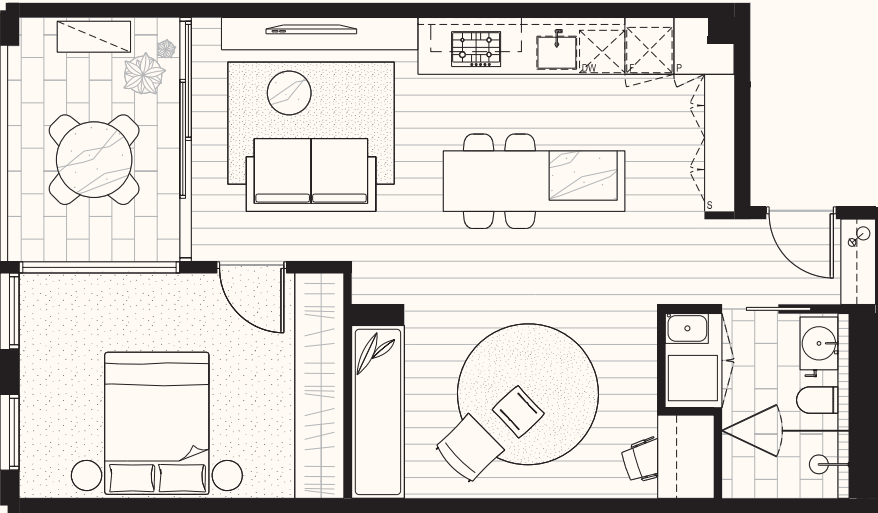
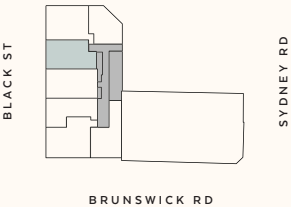
— 1 Bedroom, 1 Bathroom —

Internal Area:	66.1m ²
External Area:	8.1m ²
<hr/>	
Total Area:	74.2m ²
<hr/>	

— Apartments —

1.03, 2.03

— Key Plan —



Disclaimer: These plans are intended as a guide only. The dimensions and areas are approximate only and may not accurately represent the actual dimensions and areas of the apartments or the spaces within them and are subject to change without notice. In addition, locations of utilities may vary during construction and fittings and fixtures on these plans are for illustrative purposes only. The areas are generally measured in accordance with the Property Council of Australia method of measurement. Prospective purchasers must rely on their own enquiries and should refer to the Contract of Sale and its schedules for all matters to be included in the purchase price of the apartment, including plans, finishes, fixtures, fittings, appliances and other particulars of sale. Loose furniture and planters are not included. Extent of floor finishes may vary. External space and landscaping indicative only.



SARAH SANDS

EST. 1846



TYPE 1C

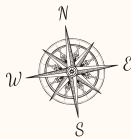
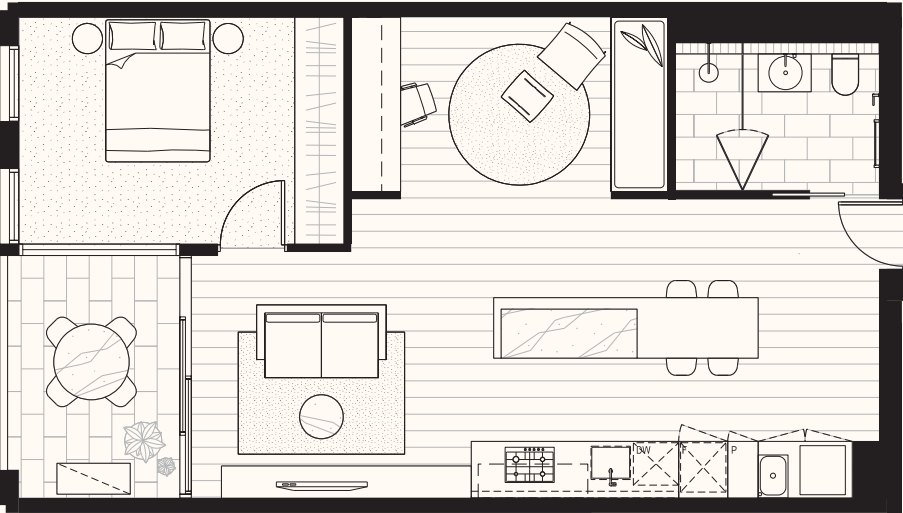
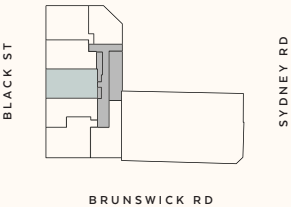
— 1 Bedroom, 1 Bathroom —

Internal Area:	71.6m ²
External Area:	8.1m ²
<hr/>	
Total Area:	79.7m ²
<hr/>	

— Apartments —

1.04, 2.04

— Key Plan —



Disclaimer: These plans are intended as a guide only. The dimensions and areas are approximate only and may not accurately represent the actual dimensions and areas of the apartments or the spaces within them and are subject to change without notice. In addition, locations of utilities may vary during construction and fittings and fixtures on these plans are for illustrative purposes only. The areas are generally measured in accordance with the Property Council of Australia method of measurement. Prospective purchasers must rely on their own enquiries and should refer to the Contract of Sale and its schedules for all matters to be included in the purchase price of the apartment, including plans, finishes, fixtures, fittings, appliances and other particulars of sale. Loose furniture and planters are not included. Extent of floor finishes may vary. External space and landscaping indicative only.



SARAH SANDS

EST. 1846



TYPE 1D

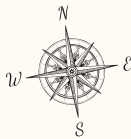
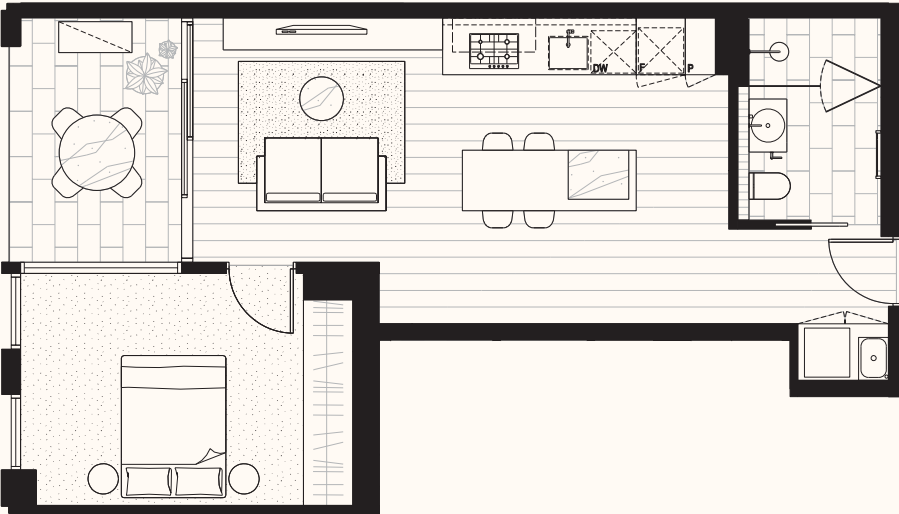
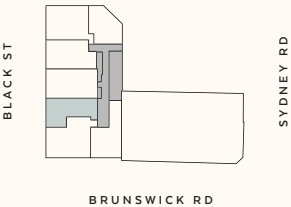
— 1 Bedroom, 1 Bathroom —

Internal Area:	56.0m ²
External Area:	8.1m ²
<hr/>	
Total Area:	64.1m ²

— Apartments —

1.05, 2.05

— Key Plan —



Disclaimer: These plans are intended as a guide only. The dimensions and areas are approximate only and may not accurately represent the actual dimensions and areas of the apartments or the spaces within them and are subject to change without notice. In addition, locations of utilities may vary during construction and fittings and fixtures on these plans are for illustrative purposes only. The areas are generally measured in accordance with the Property Council of Australia method of measurement. Prospective purchasers must rely on their own enquiries and should refer to the Contract of Sale and its schedules for all matters to be included in the purchase price of the apartment, including plans, finishes, fixtures, fittings, appliances and other particulars of sale. Loose furniture and planters are not included. Extent of floor finishes may vary. External space and landscaping indicative only.



SARAH SANDS

EST. 1846

TYPE 2B

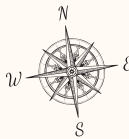
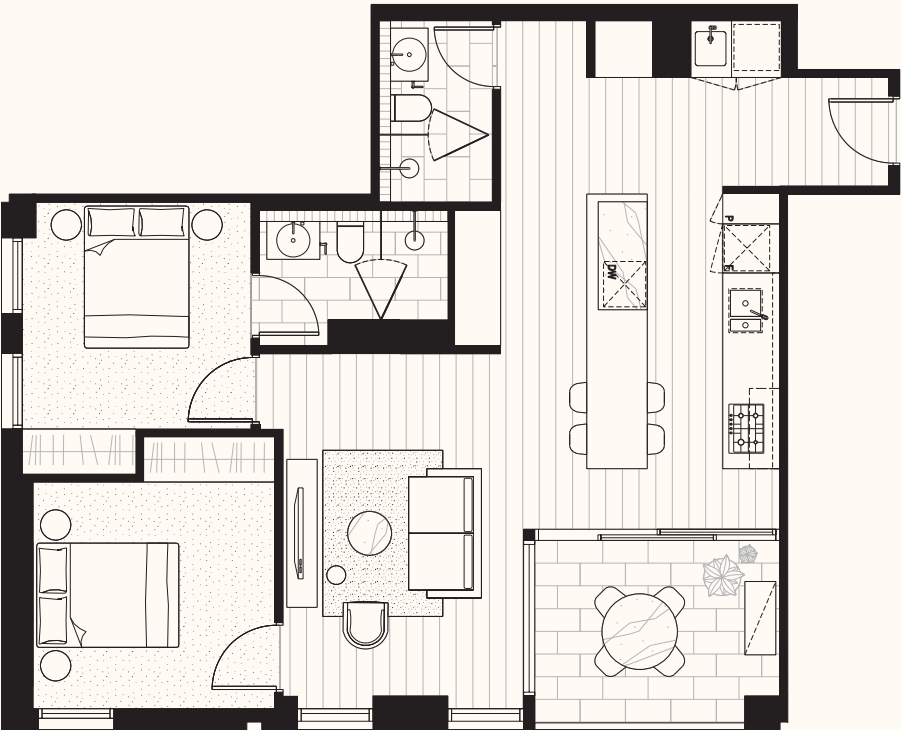
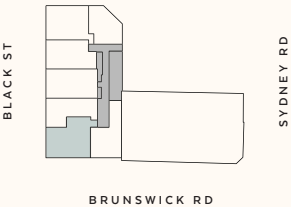
— 2 Bedroom, 1 Bathroom —

Internal Area:	81.0m ²
External Area:	8.4m ²
<hr/>	
Total Area:	89.4m ²

— Apartments —

1.06, 2.06

— Key Plan —



Disclaimer: These plans are intended as a guide only. The dimensions and areas are approximate only and may not accurately represent the actual dimensions and areas of the apartments or the spaces within them and are subject to change without notice. In addition, locations of utilities may vary during construction and fittings and fixtures on these plans are for illustrative purposes only. The areas are generally measured in accordance with the Property Council of Australia method of measurement. Prospective purchasers must rely on their own enquiries and should refer to the Contract of Sale and its schedules for all matters to be included in the purchase price of the apartment, including plans, finishes, fixtures, fittings, appliances and other particulars of sale. Loose furniture and planters are not included. Extent of floor finishes may vary. External space and landscaping indicative only.



PEREGRINEPROJECTS

SARAH SANDS

EST. 1846

TYPE 3A

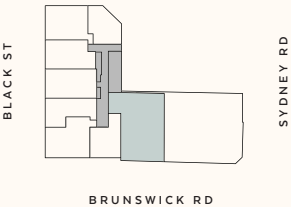
— 3 Bedroom, 2 Bathroom —

Internal Area:	121.9m ²
External Area:	51.3m ²
<hr/>	
Total Area:	173.2m ²

— Apartments —

2.08

— Key Plan —



Disclaimer: These plans are intended as a guide only. The dimensions and areas are approximate only and may not accurately represent the actual dimensions and areas of the apartments or the spaces within them and are subject to change without notice. In addition, locations of utilities may vary during construction and fittings and fixtures on these plans are for illustrative purposes only. The areas are generally measured in accordance with the Property Council of Australia method of measurement. Prospective purchasers must rely on their own enquiries and should refer to the Contract of Sale and its schedules for all matters to be included in the purchase price of the apartment, including plans, finishes, fixtures, fittings, appliances and other particulars of sale. Loose furniture and planters are not included. Extent of floor finishes may vary. External space and landscaping indicative only.



SARAH SANDS

EST. 1846



TYPE 2C

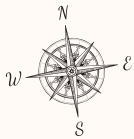
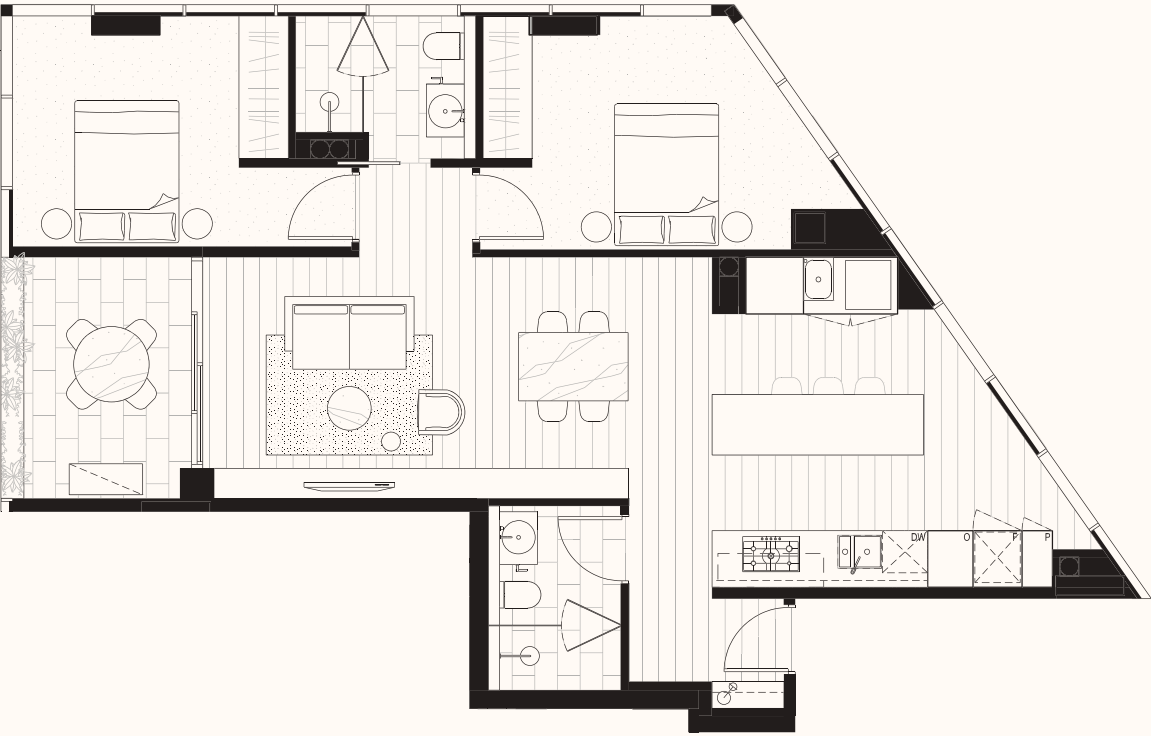
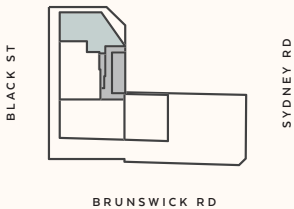
— 2 Bedroom, 2 Bathroom —

Internal Area:	87.9m ²
External Area:	8.5m ²
<hr/>	
Total Area:	96.4m ²

— Apartments —

3.01, 4.01, 5.01, 6.01

— Key Plan —



Disclaimer: These plans are intended as a guide only. The dimensions and areas are approximate only and may not accurately represent the actual dimensions and areas of the apartments or the spaces within them and are subject to change without notice. In addition, locations of utilities may vary during construction and fittings and fixtures on these plans are for illustrative purposes only. The areas are generally measured in accordance with the Property Council of Australia method of measurement. Prospective purchasers must rely on their own enquiries and should refer to the Contract of Sale and its schedules for all matters to be included in the purchase price of the apartment, including plans, finishes, fixtures, fittings, appliances and other particulars of sale. Loose furniture and planters are not included. Extent of floor finishes may vary. External space and landscaping indicative only.



SARAH SANDS

EST. 1846

TYPE 2D

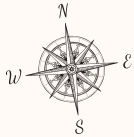
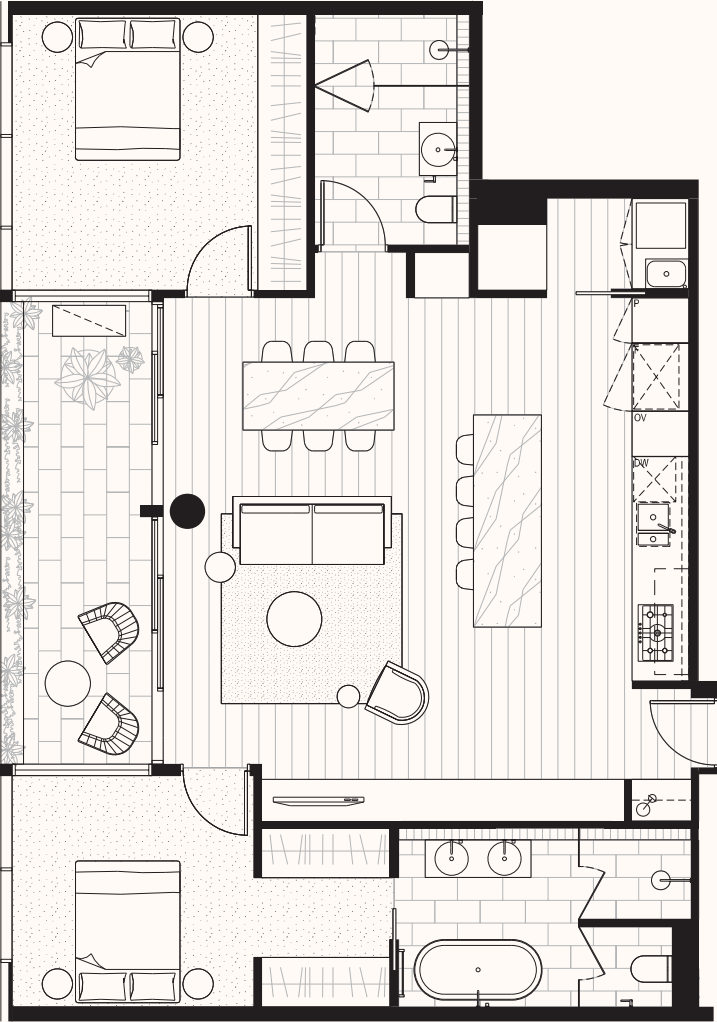
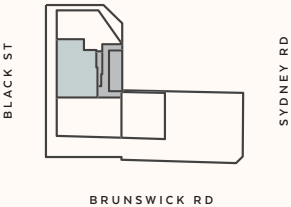
— 2 Bedroom, 2 Bathroom —

Internal Area:	105.5m ²
External Area:	12.2m ²
<hr/>	
Total Area:	117.7m ²
<hr/>	

— Apartments —

3.02, 4.02, 5.02, 6.02

— Key Plan —



Disclaimer: These plans are intended as a guide only. The dimensions and areas are approximate only and may not accurately represent the actual dimensions and areas of the apartments or the spaces within them and are subject to change without notice. In addition, locations of utilities may vary during construction and fittings and fixtures on these plans are for illustrative purposes only. The areas are generally measured in accordance with the Property Council of Australia method of measurement. Prospective purchasers must rely on their own enquiries and should refer to the Contract of Sale and its schedules for all matters to be included in the purchase price of the apartment, including plans, finishes, fixtures, fittings, appliances and other particulars of sale. Loose furniture and planters are not included. Extent of floor finishes may vary. External space and landscaping indicative only.



SARAH SANDS

EST. 1846



TYPE 3B

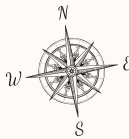
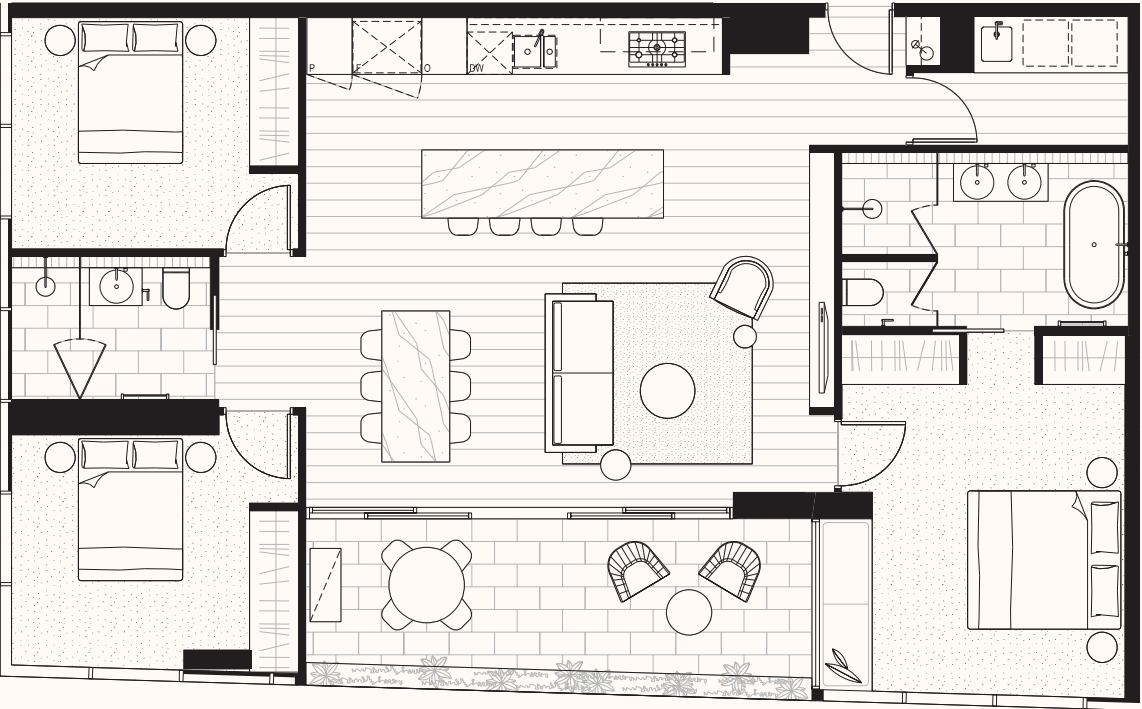
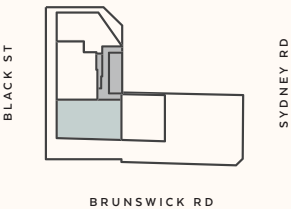
— 3 Bedroom, 2 Bathroom —

Internal Area:	122.3m ²
External Area:	15.4m ²
Total Area:	137.7m ²

— Apartments —

3.03, 4.03, 6.03

— Key Plan —



Disclaimer: These plans are intended as a guide only. The dimensions and areas are approximate only and may not accurately represent the actual dimensions and areas of the apartments or the spaces within them and are subject to change without notice. In addition, locations of utilities may vary during construction and fittings and fixtures on these plans are for illustrative purposes only. The areas are generally measured in accordance with the Property Council of Australia method of measurement. Prospective purchasers must rely on their own enquiries and should refer to the Contract of Sale and its schedules for all matters to be included in the purchase price of the apartment, including plans, finishes, fixtures, fittings, appliances and other particulars of sale. Loose furniture and planters are not included. Extent of floor finishes may vary. External space and landscaping indicative only.



SARAH SANDS

EST. 1846



TYPE 3B (OPTION)

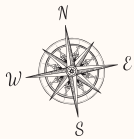
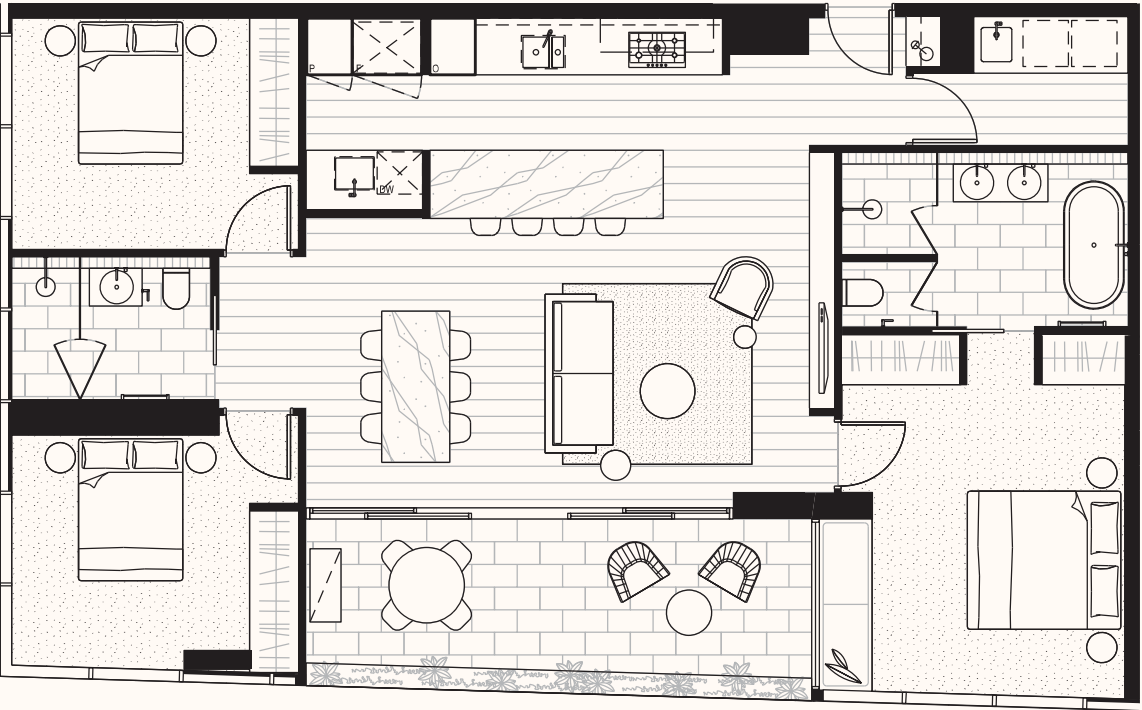
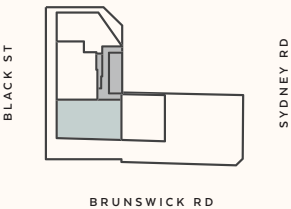
— 3 Bedroom, 2 Bathroom —

Internal Area:	122.3m ²
External Area:	15.4m ²
Total Area:	137.7m ²

— Apartments —

3.03, 4.03, 6.03

— Key Plan —



Disclaimer: These plans are intended as a guide only. The dimensions and areas are approximate only and may not accurately represent the actual dimensions and areas of the apartments or the spaces within them and are subject to change without notice. In addition, locations of utilities may vary during construction and fittings and fixtures on these plans are for illustrative purposes only. The areas are generally measured in accordance with the Property Council of Australia method of measurement. Prospective purchasers must rely on their own enquiries and should refer to the Contract of Sale and its schedules for all matters to be included in the purchase price of the apartment, including plans, finishes, fixtures, fittings, appliances and other particulars of sale. Loose furniture and planters are not included. Extent of floor finishes may vary. External space and landscaping indicative only.



SARAH SANDS

EST. 1846

TYPE 3C

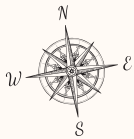
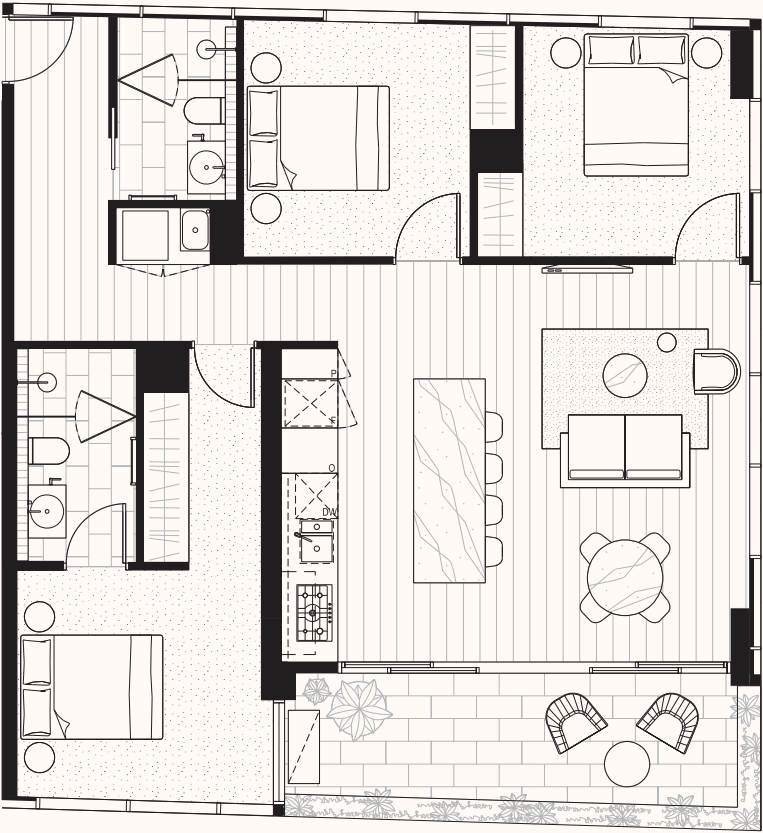
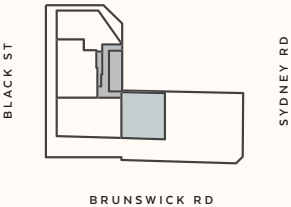
— 3 Bedroom, 2 Bathroom —

Internal Area:	94.9m ²
External Area:	12.5m ²
Total Area:	107.4m ²

— Apartments —

3.04, 4.04, 6.04

— Key Plan —



Disclaimer: These plans are intended as a guide only. The dimensions and areas are approximate only and may not accurately represent the actual dimensions and areas of the apartments or the spaces within them and are subject to change without notice. In addition, locations of utilities may vary during construction and fittings and fixtures on these plans are for illustrative purposes only. The areas are generally measured in accordance with the Property Council of Australia method of measurement. Prospective purchasers must rely on their own enquiries and should refer to the Contract of Sale and its schedules for all matters to be included in the purchase price of the apartment, including plans, finishes, fixtures, fittings, appliances and other particulars of sale. Loose furniture and planters are not included. Extent of floor finishes may vary. External space and landscaping indicative only.



SARAH SANDS

EST. 1846

TYPE 3C (OPTION)

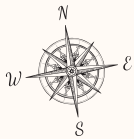
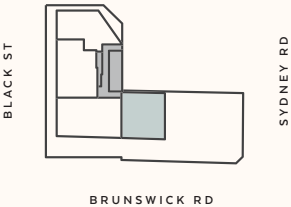
— 2 Bedroom, 2 Bathroom —

Internal Area:	94.9m ²
External Area:	12.5m ²
<hr/>	
Total Area:	107.4m ²

— Apartments —

3.04, 4.04, 6.04

— Key Plan —



Disclaimer: These plans are intended as a guide only. The dimensions and areas are approximate only and may not accurately represent the actual dimensions and areas of the apartments or the spaces within them and are subject to change without notice. In addition, locations of utilities may vary during construction and fittings and fixtures on these plans are for illustrative purposes only. The areas are generally measured in accordance with the Property Council of Australia method of measurement. Prospective purchasers must rely on their own enquiries and should refer to the Contract of Sale and its schedules for all matters to be included in the purchase price of the apartment, including plans, finishes, fixtures, fittings, appliances and other particulars of sale. Loose furniture and planters are not included. Extent of floor finishes may vary. External space and landscaping indicative only.

